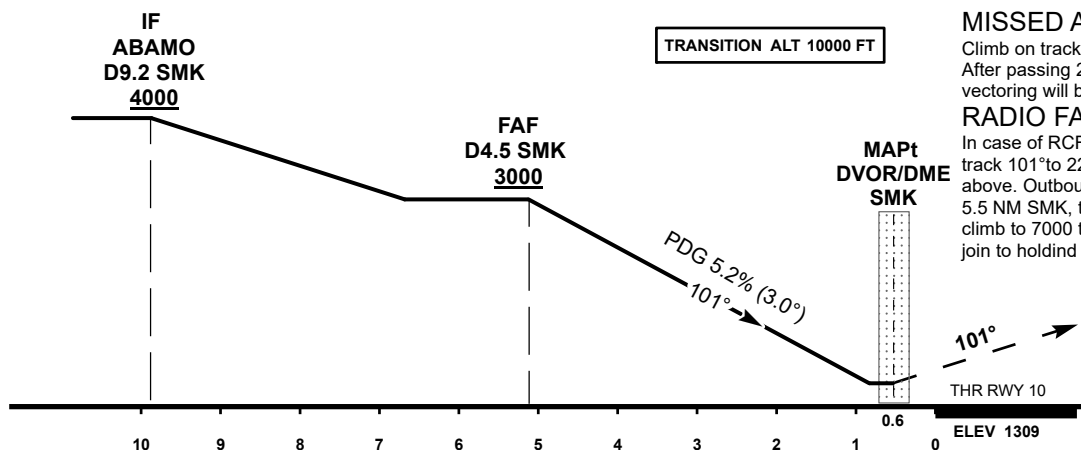
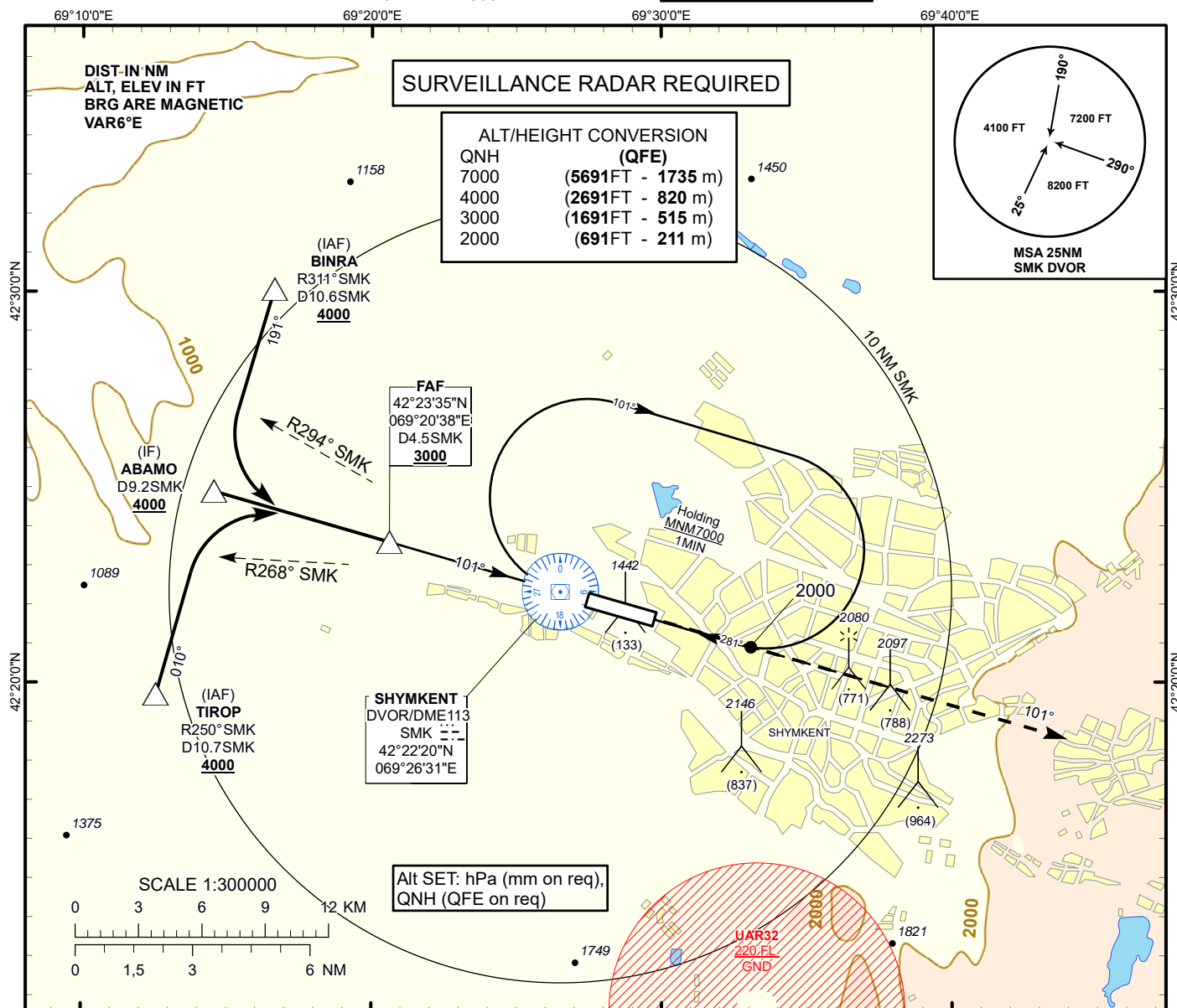


INSTRUMENT
APPROACH
CHART - ICAO

AERODROME ELEV 1387 FT
HEIGHTS RELATED TO
THR RWY10 - ELEV 1309 FT

SHYMKENT TOWER 125.9
SHYMKENT ATIS (EN) 119.2
SHYMKENT ATIS (RU) 126.6

SHYMKENT
VOR/DME Y
RWY 10



Aircraft Category		A	B	C	D	DIST to THR	NM	5.2	4	3	2	1
Straight-in Approach OCA/H						DME SMK	NM	4.5	3.3	2.3	1.3	0.3
	VOR/DME	1630(320)	1630(320)	1630(320)	1630(320)	ALTITUDE	FT	3000	2632	2313	1995	1676
						HEIGHT	FT	(1691)	(1323)	(1004)	(686)	(367)

Aerodrome Operating Minima MDH ft x RVR (CMV)	VOR/DME					GS	Kt	80	100	120	140	160	180
						Desc.Rate(5.2%)	ft/min	420	530	630	740	840	950
						FAF-MAPt(4.5NM)	min:sec	3:23	2:42	2:15	1:56	1:41	1:30

CHANGE: IAF, IF, FAF ALT, editorial.

SHYMKENT
VOR/DME Y

AERONAUTICAL DATA TABULATION

VOR approach to RWY10 from ABAMO, BINRA, TIROP	
Fix/point	Coordinates
(FAF) D4.5 SMK	42° 23' 35.2"N 069° 20' 37.8"E
ABAMO (IF) D9.2 SMK	42° 24' 53.9"N 069° 14' 33.3"E
BINRA (IAF) R311°, D10.6 SMK	42° 30' 04.6"N 069° 16' 38.1"E
TIROP (IAF) R250°, D10.7 SMK	42° 19' 42.2"N 069° 12' 33.8"E
SMK DVOR/DME	42° 22' 20.4"N 069° 26' 30.6"E
THR RWY 10	42° 22' 09.24"N 069° 27' 22.27"E
Final approach descent angle is 3°	